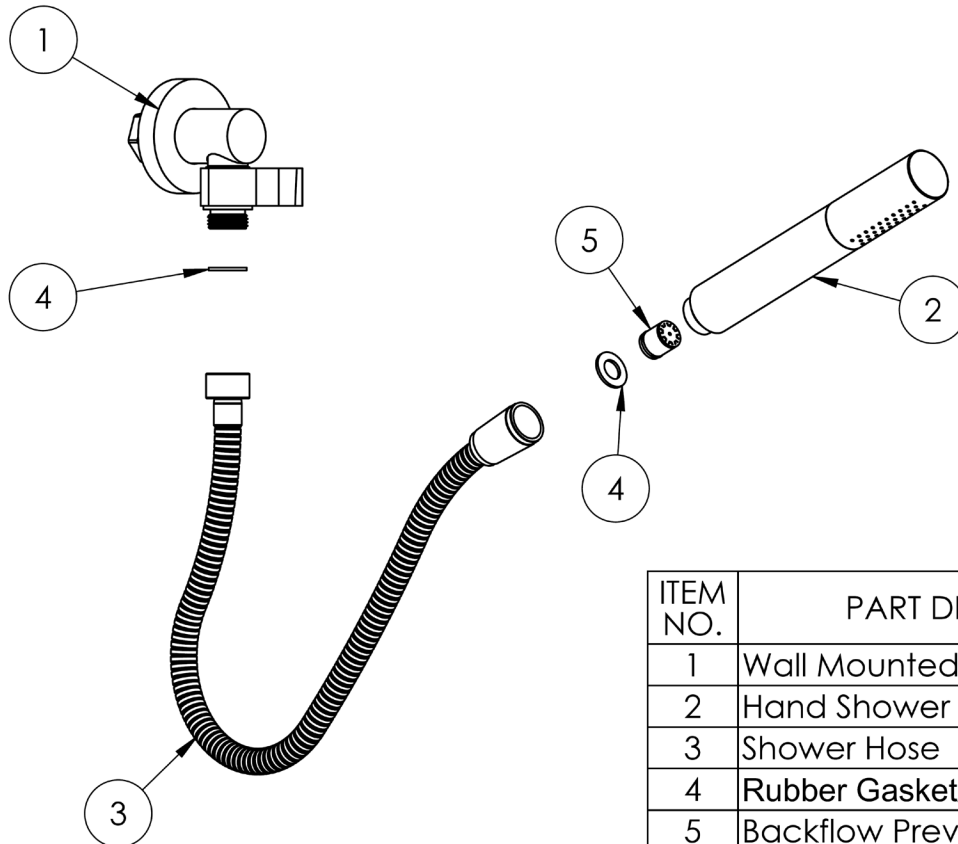


Wall Mounted Hand Shower Set

- Solid brass construction
- Limited lifetime warranty (residential use)



ITEM NO.	PART DISCRIPTION
1	Wall Mounted Elbow with Hook
2	Hand Shower
3	Shower Hose
4	Rubber Gasket/Restrictor
5	Backflow Preventer

1. Install ½" pipe nipple so that it extends beyond the finished wall.
2. Run water through the system to flush out dirt and debris.
3. Apply sealant tape around the exposed threads of the pipe nipple.
4. Slide the escutcheon onto the elbow, thread the elbow onto the pipe nipple.
5. Press the escutcheon against the finished wall.
6. Ensure that the rubber gasket is inserted into hose. Handtighten the hose to elbow and hand shower.

IMPORTANT INSTALLATION INFORMATION

- USE TEFLON TAPE OR PIPE SEALANT FOR THREADED CONNECTIONS
- DO NOT USE PLUMBER'S PUTTY ON ANY OF THE BRASS COMPONENTS
This will cause the finish to tarnish and void the warranty. A non-corrosive Alkoxy Silicone is recommended.
- COPPER ADAPTORS MAY BE REQUIRED TO COMPLETE YOUR INSTALLATION